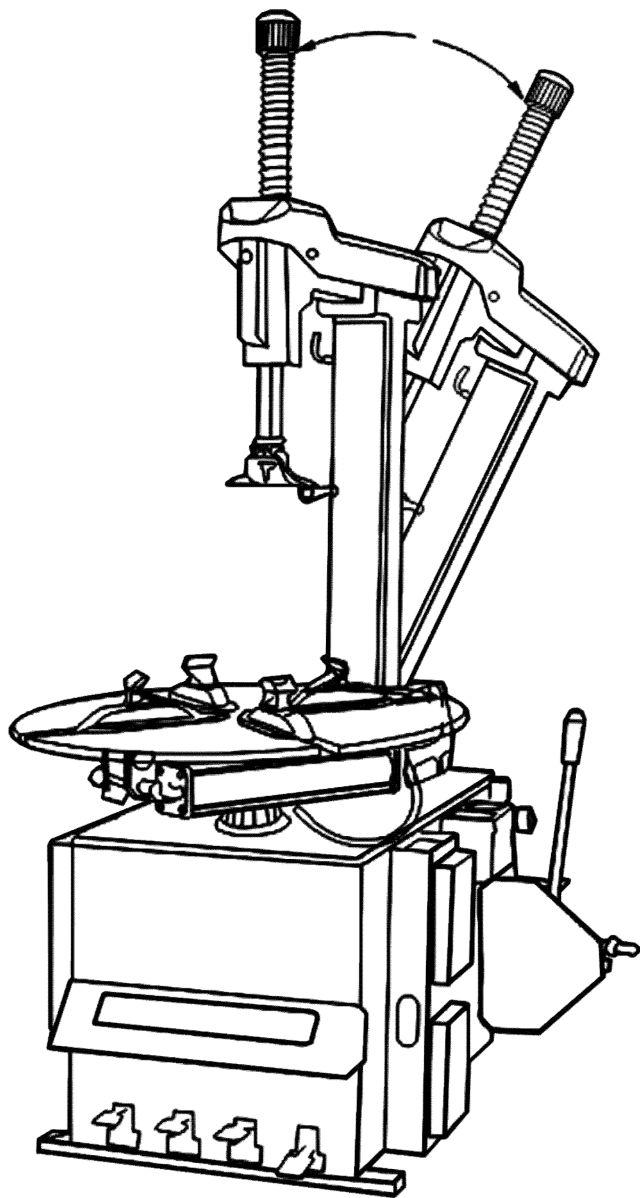


TYRE CHANGER

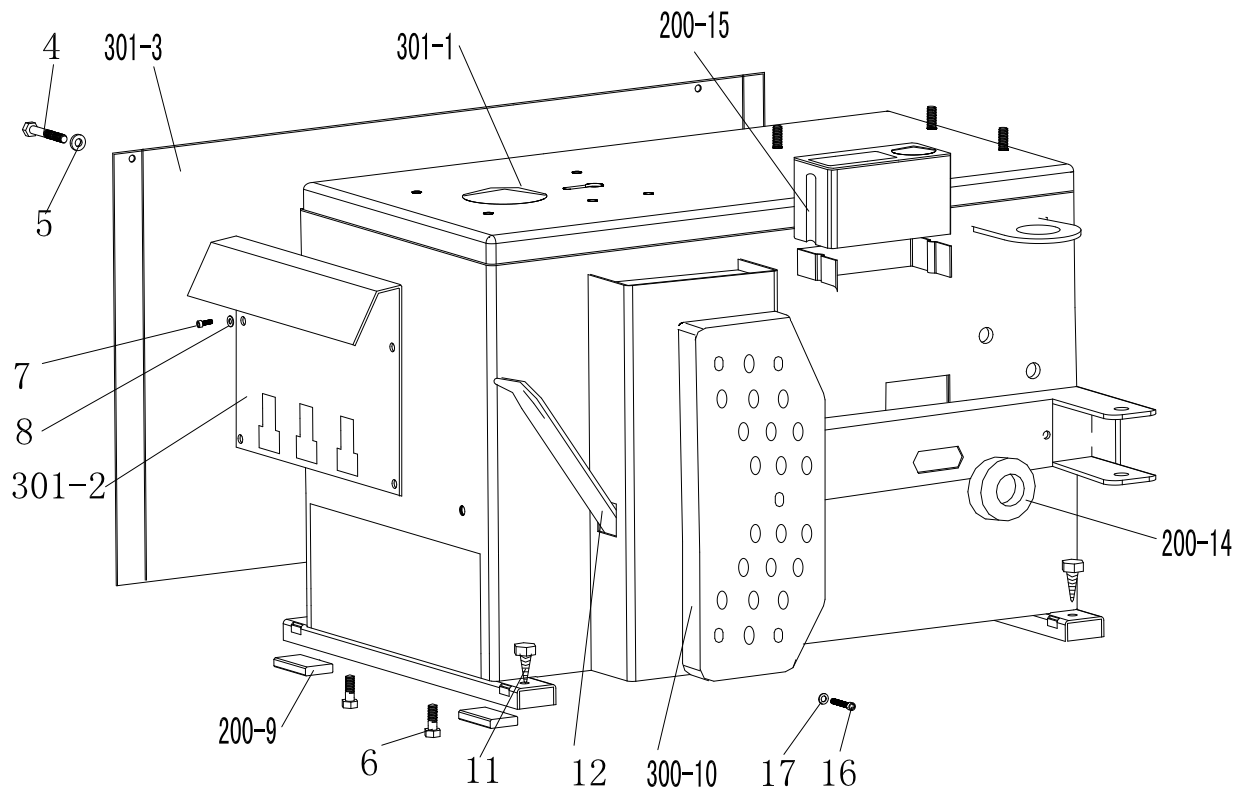
INSTRUCTION & MAINTENANCE MANUAL

We follow the way that wheel moving!

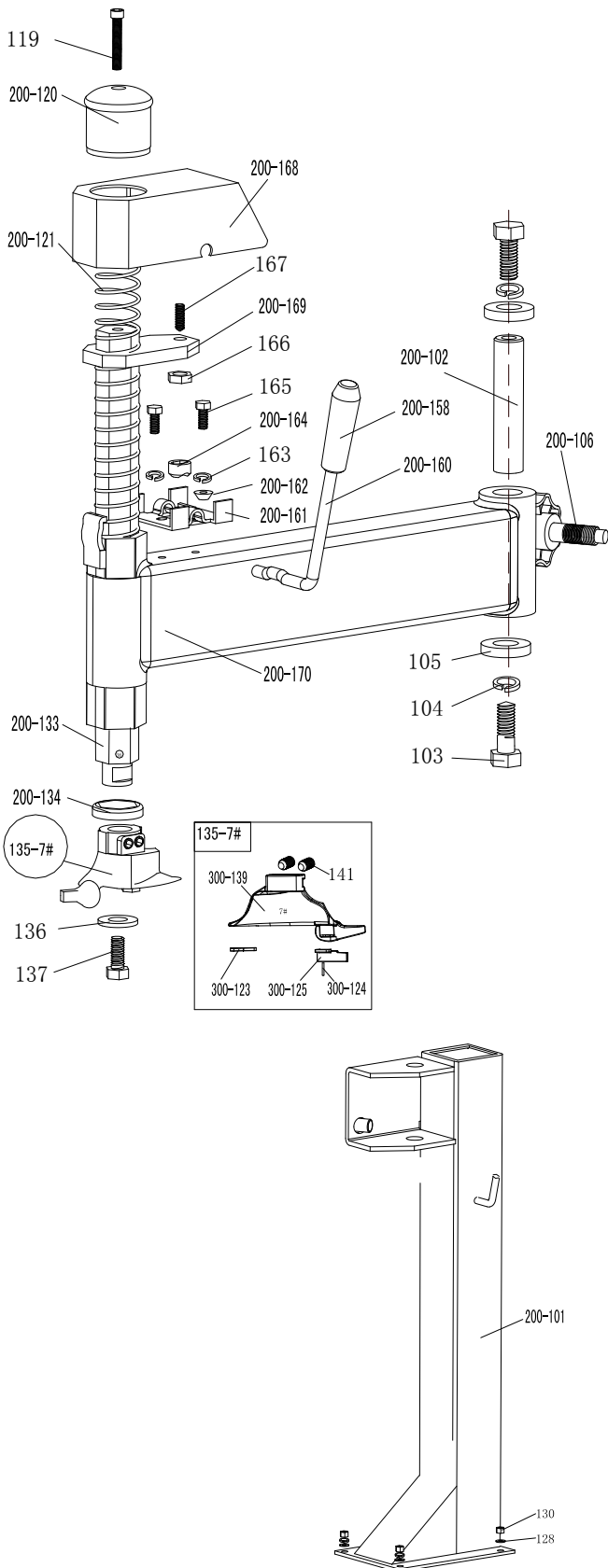


Read this entire manual carefully and completely before installation or operation of the tire changer

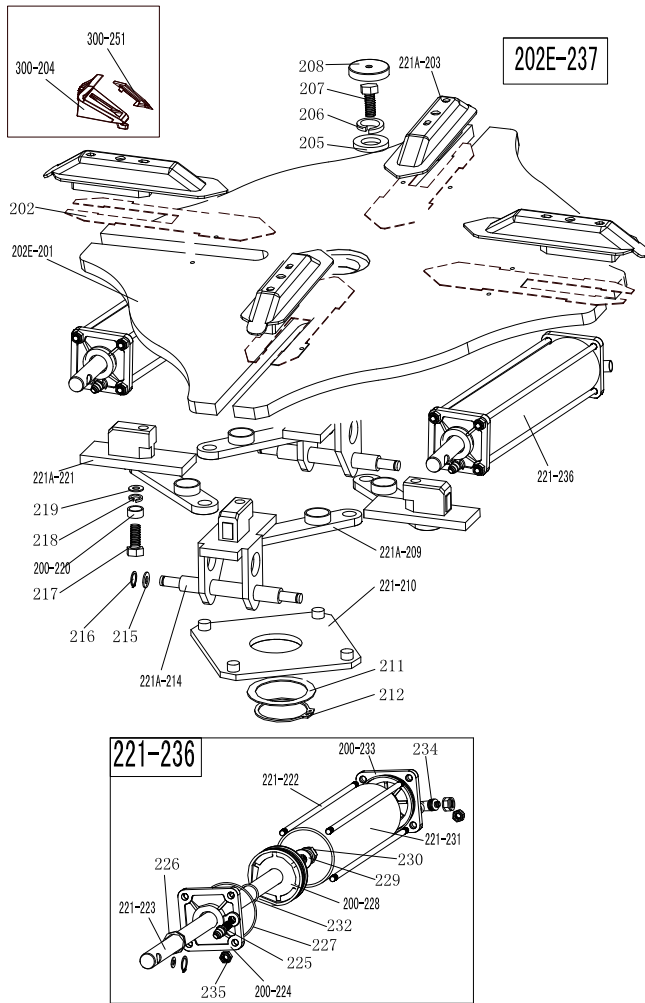
14. Exploded drawing:



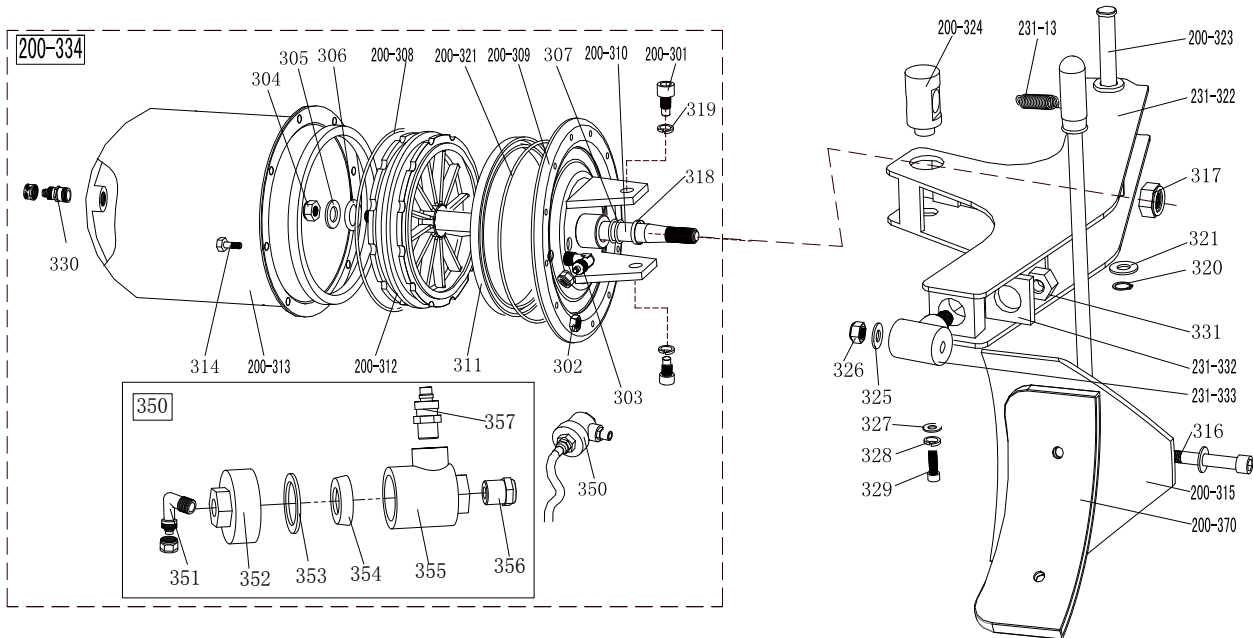
301-1	CX-301-010000-A	Machine body
301-2	CX-301-080000-0	Pedal front cover
301-3	CX-201-020000-0	Left cover
4	B-014-100551-0	Hex socket head bolt M6×55
5	B-040-061412-1	Flat washer Ø6*14*1.2
6	B-014-080251-0	Outer hex bolt M8x25
7	B-010-060201-0	Outer hex bolt M6×20
8	B-040-061412-1	Flat washer Ø 6*14*1.2
200-9	C-000-001020-0	Rubber foot buffer
300-10	C-300-500000-0	Bead breaker buffer
11	B-027-060401-0	Grounding screw M6x40
12	C-200-580000-0	Lifting lever
200-14	C-200-510000-0	Bead breaker arm rubber
200-15	C-200-470000-0	Oil-water box
16	B-010-080201-0	Hex socket head bolt M8x20
17	B-040-081715-1	Flat washer Ø 8*17*1.5



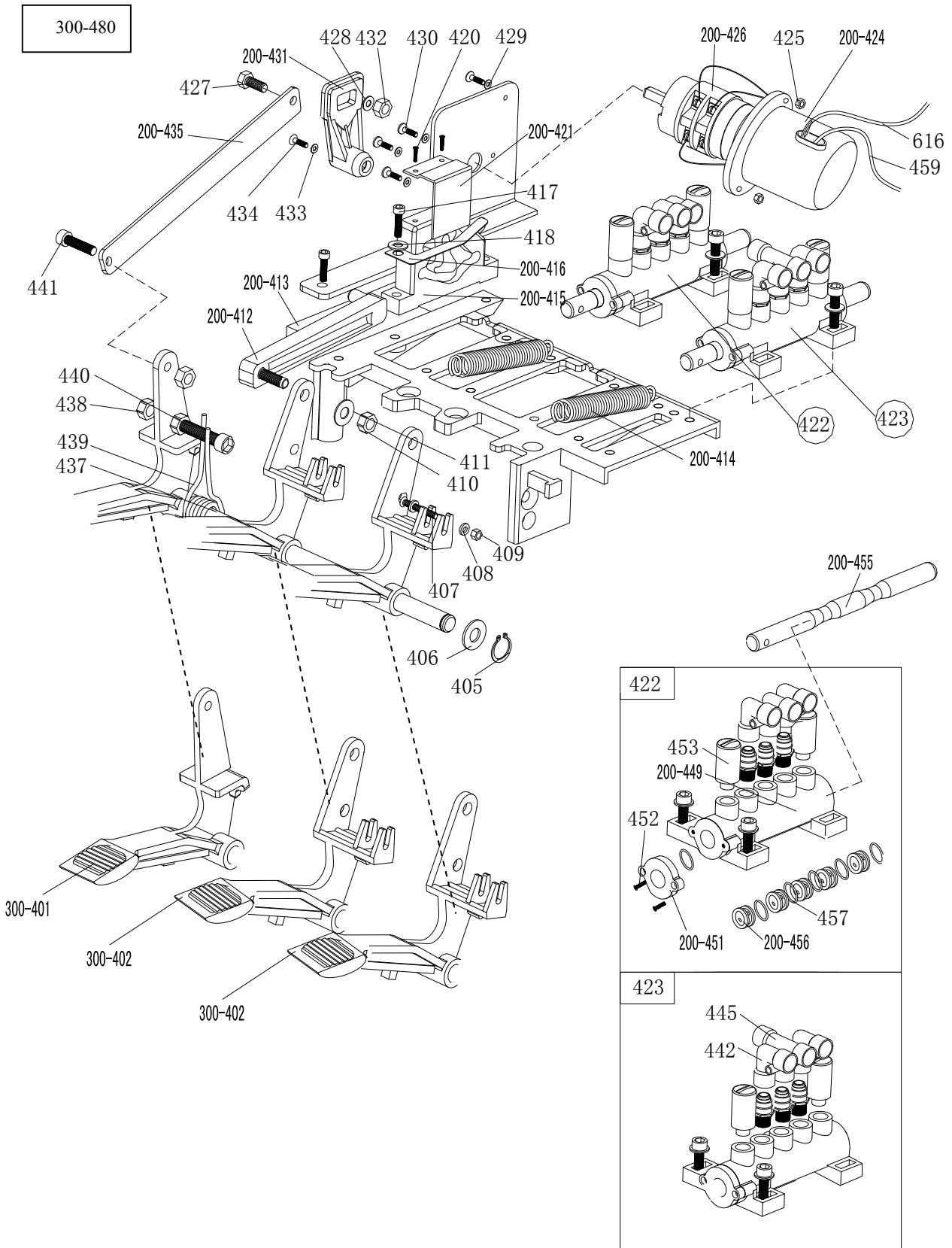
200-101		Column
200-102	CX-200-190000-0	Swing arm pin
103	B-014-140301-0	Outer hex bolt M14x30
104	B-050-140000-0	Spring washer Ø14
105	CX-200-140000-0	Big washer
200-106	C-200-350000-0	Column adjust handle
119	B-010-100501-0	Hex socket head bolt M10×50
200-120	C-200-490000-0	Vertical arm cap 200
200-121	C-200-390000-0	Vertical arm spring
128	B-040-102020-1	Flat washer Ø10X2
130	B-001-100001-0	Self-locking nut M10
200-133	CX-200-160000-0	Vertical arm 200
200-134	C-200-520000-0	Vertical arm washer
135-7#	Cw-013-030000-0	Complete mount/demount head
136	CX-200-170000-0	Mount/demount head flat washer
137	B-014-100251-0	Outer hex bolt M10×25
300-139	C-300-150000-0	Mount/demount head 7#
300-123	C-2592-150500-0	Mount/demount head flat protective washer
300-124	C-200-150400-0	Hex round pin
300-125	C-2592-150300-0	Mount/demount head protective washer
141	B-007-120161-0	Hex socket head bolt M12X16
200-158	C-200-230200-0	Locking Handle cover
200-160	CX-200-230000-0	Locking Handle
200-161	CX-200-200000-0	Locking plate
200-162	C-200-240000-0	Locking block cover
163	B-050-080000-0	Spring washer Ø8
200-164	C-200-210000-0	Eccentric shaft nut
165	B-014-080251-0	Outer hex bolt M8×25
166	B-004-120071-1	Nut M12X1.75X7
167	B-007-120301-0	Hex socket head bolt M12X30
200-168	C-200-480000-0	Locking plate cap
200-169	CX-200-220000-0	Hex locking board 200
200-170	CX-200-180000-0	Swing arm 470



202E-201	CX-202-130100-0	Turntable assembly
202	CX-221-120300-0	Jaw sliding plate(optional)
221A-203	CX-200-120000-0	Jaw cap assembly
300-204	C-300-570000-0	Jaw 300
205	CX-200-140000-0	Big washer
206	B-050-160000-0	Spring washer Ø16
207	B-014-160401-0	Outer hex bolt M16×40
208	C-200-440000-0	Turntable cap
221A-209	CX-221-310000-0	Connection rod assembly 615
221-210	CX-221-280000-0	Square turntable 615
211	CX-200-290000-0	Square turntable washer
212	B-055-650001-0	Snap ring Ø65(shaft)
221A-214	CX-221-110000-0	Jaw slide guide with pin
215	B-040-122520-1	Flat washer Ø12X25X2
216	B-055-120001-0	Snap ring Ø12(shaft)
217	B-014-120801-0	Outer hex bolt M12×80
218	B-046-122050-1	Teeth locking washer Ø12x1
219	B-040-123030-1	Flat washer Ø12X30X3
200-220	CX-200-300000-0	Connection rod nut
221A-221	CX-221-110100-0	Jaw slide guide without pin
221-222	C-221-100400-0	Threaded connection rod 393
221-223	C-221-100200-0	Clamping cylinder piston rod 400
200-224	C-200-100100-0	Clamping cylinder cover without handle
225	S-011-010808-0	Straight union 1/8"-Ø8
226	S-005-020075-0	V- seal 20*28*7.5
227	S-000-063265-0	O-seal 63*2.65
200-228	C-200-540000-0	Clamping cylinder piston φ70
229	B-040-122520-1	Flat washer Ø12X25X2
230	B-004-120071-1	Nut M12X7X1.75
221-231	C-221-100500-0	Clamping cylinder barrel 360
232	S-000-019262-0	O-seal 20X2.65
200-233	C-200-100300-0	Clamping cylinder cover with handle
234	S-018-010808-0	Union 1/8-Ø8
235	B-001-080001-0	Self-locking nut M8
221-236	CW-105-021101-0	Complete clamping cylinder
300-251	C-300-730000-0	Jaw protection cover
202E-237	CW-104-02020-1	Complete turntable assembly

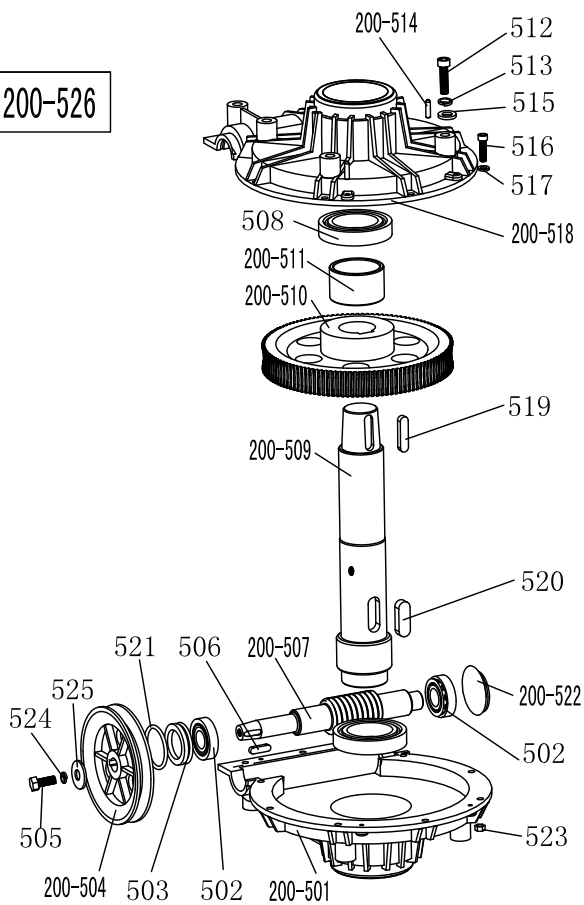


231-13	C-231-360000-0	Bead beaker arm spring	231-322	CX-231-030000-0	Enlarge Bead breaker arm 231
200-301	B-010-140301-0	Hex socket head bolt M14×30	200-323	CX-200-040000-0	Bead breaker pin
302	B-001-060001-0	Self-locking nut M6	200-324	CX-200-050600-0	Bead breaker cylinder rotating pin
303	S-018-010408-0	Union (90°)1/4-Ø8	325	B-040-122520-1	Flat washer Ø12*24*2
304	B-004-160001-1	Nut M16*1.5	326	B-001-120001-0	Self-locking M12
305	B-040-162820-1	Flat washer Ø16*28*2	327	B-040-083030-1	Flat washer Ø8*30*3
306	S-000-016265-0	O-seal Ø 16*2.65	328	B-050-080000-0	Spring washer Ø8
307	S-000-020265-0	O-seal Ø 20*2.65	329	B-014-080201-0	Outer hex bolt M8×20
200-308	S-000-180500-0	O-seal 180x5	330	S-011-010808-0	Straight union1/8-Ø8
200-309	CX-200-050500-0	Bead breaker cylinder cover assembly	331	B-001-160001-0	Self-locking nut M16*1.75
200-310	C-200-050100-0	Bead breaker cylinder piston rod	231-332	CX-231-030900-0	Bead breaker rotate shaft washer
311	S-005-168115-0	V-seal 185X168X11.5	231-333	CX-231-030800-0	Bead break rotate shaft
200-312	C-200-050200-0	Bead breaker cylinder piston	200-334	CW-108-020000-0	Complete bead breaker assembly
200-313	CX-200-050300-0	Bead breaker cylinder barrel	335		Flat washer
314	B-010-060161-0	Hex socket head bolt M6×16	350	CW-112-209800-0	Bead breaker cylinder exhaust valve
200-315	CX-200-070000-0	Bead breaker shovel assembly	351	S-012-010808-0	Union (90°)1/8-Ø8
316	B-010-120901-0	Hex socket head bolt M12×90	352	C-098-600200-0	Bead breaker cylinder exhaust valve cover
317	B-004-160001-1	Self-locking nut M16*1.5	353	C-098-600400-0	Seal washer
318	U-006-000001-2	Guide belt	354	C-098-600300-0	Bidirectional seal
319	B-050-140000-0	Spring washer Ø14	355	C-098-600100-0	Bead breaker cylinder exhaust valve barrel
320	B-055-160001-0	Snap ring Ø16	356	S-023-010401-6	Muffler
321	B-040-162820-1	Flat washer	357	S-010-010408-0	Straight union 1/4- Ø8
200-370	C-200-070600-0	Bead breaker shovel protection cover(optional)	200-321	S-000-175500-0	O-seal Ø173.4x5.3

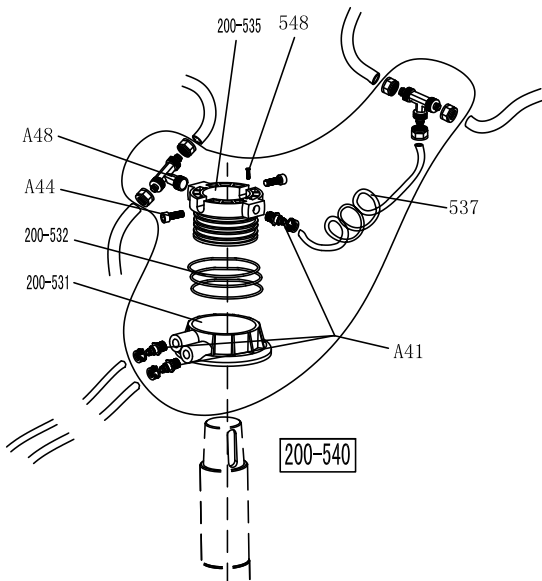


300-401	CX-300-060400-0	Reverse switch pedal	429	B-040-040000-1	Flat washer Ø 4
300-402	CX-300-060300-0	5-way valve pedal(right)	430	B-024-040161-0	Cross-round head screw M4*16
405	B-055-120001-0	Snap ring Ø12	200-431	C-200-530000-0	Reverse switch handle
406	B-040-122520-1	Flat washer Ø12*24*2	432	B-001-060001-0	Self-locking nut M6
407	B-024-040301-0	Cross head screw M4X30	433	B-040-030000-1	Flat washer Ø3
408	B-040-040000-1	Flat washer Ø 4	434	B-017-030161-0	Cross head screw M3X18
409	B-001-040001-0	Self-locking nut M4	200-435	CX-200-060600-0	Pedal connection rod
410	B-001-080001-0	Self-locking nut M8	437	CX-200-060700-0	Pedal front shaft
411	B-040-081715-1	Flat washer Ø8*17*1.5	438	B-004-080001-0	Nut M8
200-412	C-200-061300-0	Cam connection rod	439	C-200-370000-0	Pedal twist spring
200-413	C-200-060100-0	Pedal support board	440	B-010-080501-0	Hex socket head bolt M8×50
200-414	C-200-380000-0	Pedal Spring	441	B-010-080201-0	Hex socket head bolt M8×20
200-415	C-200-061500-0	Cam	442	S-012-010808-0	Quick union 1/8- Ø 8
200-416	C-200-810000-0	Cam washer	445	S-016-010808-2	T-union1/8-2* Ø 8
417	B-010-060201-0	Hex socket head bolt M6×20	200-449	C-200-060901-0	5-way valve (left)
418	B-040-061210-1	Flat washer Ø6*12*1	200-451	C-200-061100-0	5-way valve cover
420	B-019-290121-0	Cross head self tapping screw	452	B-024-290121-0	Cross head screw ST2.9*14
200-421	CX-200-060500-0	Cam cover	453	S-023-010801-0	Muffler 1/8"
422	CW-110-020000-0	Complete 5-way valve for clamping cylinder	200-455	CX-200-061200-0	5-way valve rod
423	CW-110-020001-0	Complete 5-way valve for bead breaker cylinder	200-456	C-200-061000-0	5-way valve rod spacer
200-424	C-200-061400-0	Reverse switch cover	457	S-000-012400-0	O-seal 12*20*4
425	B-004-040001-0	Nut M4	459	C2-000-103150-0	Power supplier cable
200-426	S-060-016000-1	Reverse switch	616	C2-000-205150-0	Motor cable
427	B-010-060201-0	Hex socket head bolt M6×20	300-480		Complete 3-pedals assembly 300
428	B-040-061210-1	Flat washer Ø 6X12X1			

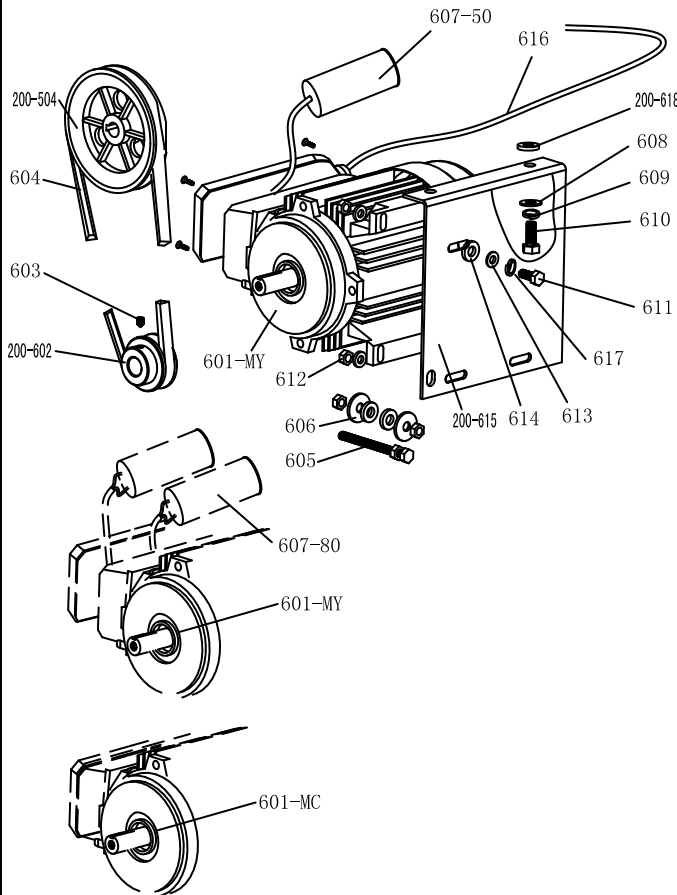
200-526



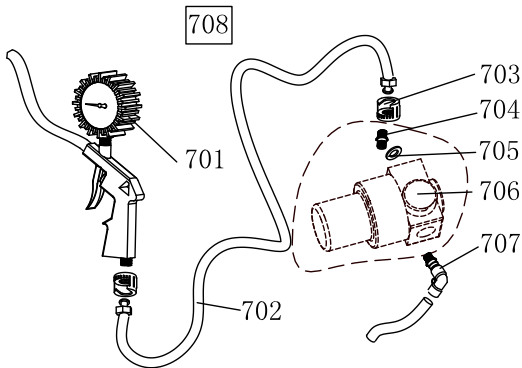
200-501	C-300-320302-0	Gear box lower cover
502	S-040-030204-0	Bearing 30204
503	S-005-020080-1	Gear box seal $\phi 20 \times 35 \times 8$
200-504	C-200-320500-0	Gear Belt pulley
505	B-014-080251-0	Outer hex bolt M8×25
506	B-065-006020-0	Key washer 6×20
200-507	C-200-320400-0	Worm rod
508	S-040-006010-0	Bearing 6010
200-509	C-200-320200-0	Worm gear shaft
200-510	C-200-320100-0	Worm gear
200-511	CZ-200-320600-0	Worm gear shaft spacer
512	B-014-100551-0	Outer hex bolt M10×55
513	B-050-100000-0	Spring washer $\phi 10$
200-514	B-060-006020-0	Pin 6X20
515	B-040-102020-1	Flat washer $\phi 10 \times 20 \times 2$
516	B-010-060201-0	Hex socket head bolt M6×20
517	B-040-061412-1	Flat washer $\phi 6 \times 14 \times 1.2$
200-518	C-300-320301-0	Gear box upper cover
519	B-065-010040-0	Key washer 10×40
520	B-065-014040-0	Key washer 14×40
521	S-000-030355-0	O-seal $\phi 30 \times 3.55$
200-522	C-200-320700-0	Oil resistant seal
523	B-001-060001-0	Self-locking nut M6
524	B-050-080000-0	Spring washer $\phi 8$
525	B-040-083030-1	Flat washer $\phi 8 \times 30 \times 3$
200-526	CW-107-020001-0	Complete gear box



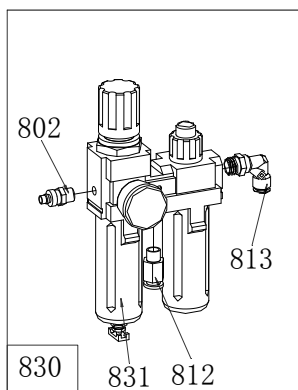
A44	B-010-060161-0	Hex socket head bolt M6×16
A48	S-017-010808-2	Quick T-union
200-531	CZ-200-430100-0	Rotating valve casing
200-532	S-000-059262-0	O-seal 59.9X2.62
200-535	CZ-200-430200-0	Rotating valve mandrel
537	S-035-055080-0	Hose 5.5* $\phi 8$
A41	S-011-010808-0	Straight union 1/8- $\phi 8$
548	B-007-040061-0	Hex socket head bolt M4X6
200-540	CW-016-020000-2	Complete Rotating valve



200-504	C-200-320500-0	Motor 220V/50HZ
601-MC	S-050-220110-5	Motor 220v
601-MY	S-050-230075-0	Motor Belt pulley
200-602	CX-200-330000-0	Motor Belt pulley
603	B-007-080121-0	Hex socket head bolt M8×12
604	S-042-000686-0	Tyre changer belt A-28
605	B-014-080651-0	Outer hex boltM8X65
606	B-040-083030-1	Flat washer Ø8X30X3
607-80	S-063-008000-0	Capacitor 80µf,110V
607-50	S-063-005000-0	Capacitor 50µf,220V
608	B-040-102020-1	Flat washer Ø10X20X2
609	B-050-100000-0	Spring washer Ø10
610	B-014-100251-0	Outer hex bolt M10X25
611	B-014-080351-0	Outer hex bolt M8X35
612	B-004-080001-0	Nut M8
613	B-040-082220-1	Flat washer φ8X22X2
614	C-200-560000-0	Motor rubber washer
200-615	CX-200-340000-2	Motor support
616	CZ-000-205150-0	Motor cable 5×1.0
617	B-050-080000-0	Spring washer φ8
200-618	C-200-560000-0	Motor rubber buffer

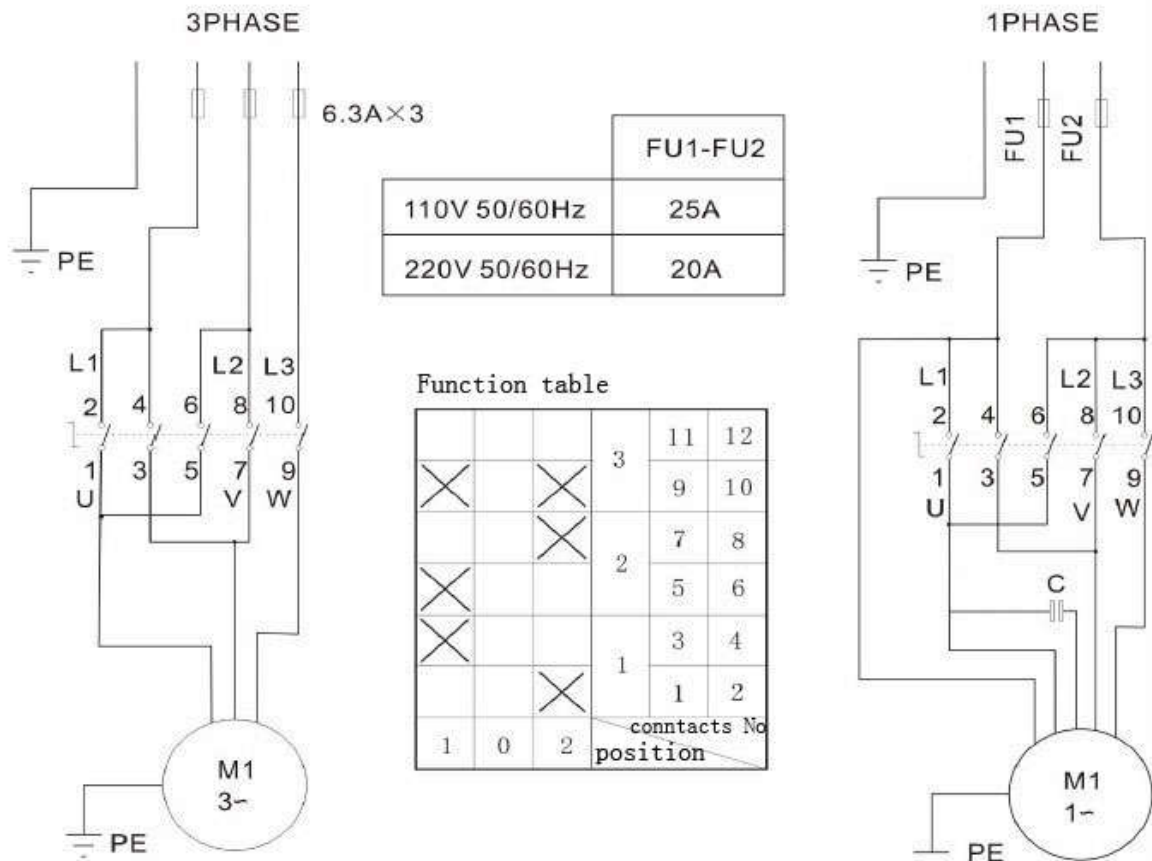


701	S-038-000100-0	Inflating gun indicator
702	S-035-014150-1	Rubber connection hose
703	S-025-104008-0	Notch nut
704	S-011-010414-1	Straight union 1/4-1/4
705	B-040-132420-1	Flat washer Ø13
706	S-030-010400-2	Pressure adjust valve
707	S-012-010408-0	Quick union 1/4-Ø8
708	CW-090-000201-0	Complete inflating gun



802	S-025-000050-0	Quick nozzle PM20
812	S-010-010808-0	Quick straight union 1/8-Ø8
813	S-018-010408-0	Union 1/4-Ø8
831	S-033-03002-0	Oil fog maker 300
830	CW-114-035000-0	Complete oil fog maker 300

15. Circuit diagram:



16. Pneumatic drawing:

